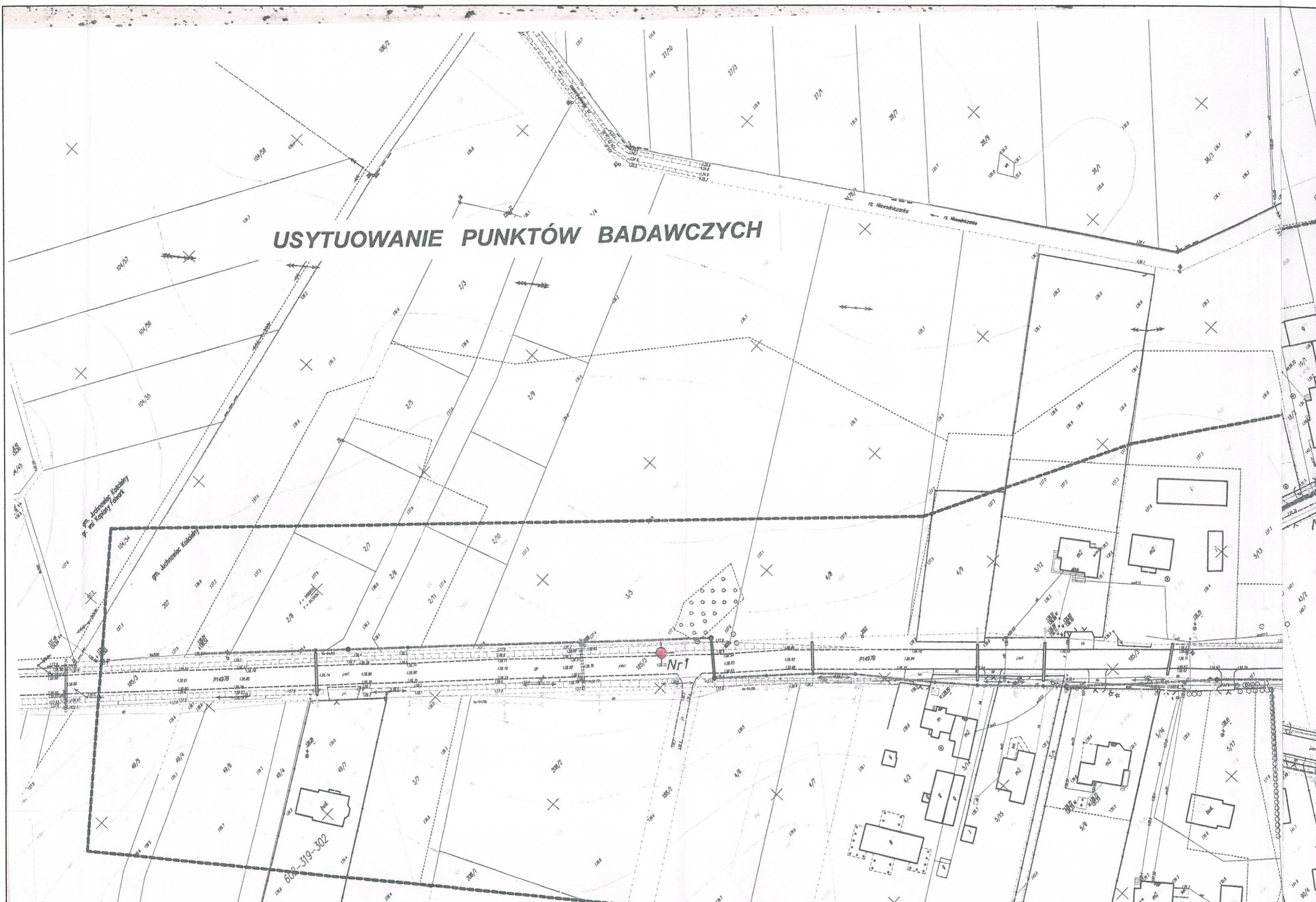


# USYTUOWANIE PUNKTÓW BADAWCZYCH



Pn. Juchoniec Kociński  
Pn. Juchoniec Kociński

600-319-302

Nr 1

P1497B

ul. Nieświżanka

Nr



Nr 2

Nr 4

P1497B

P1497B

47/3

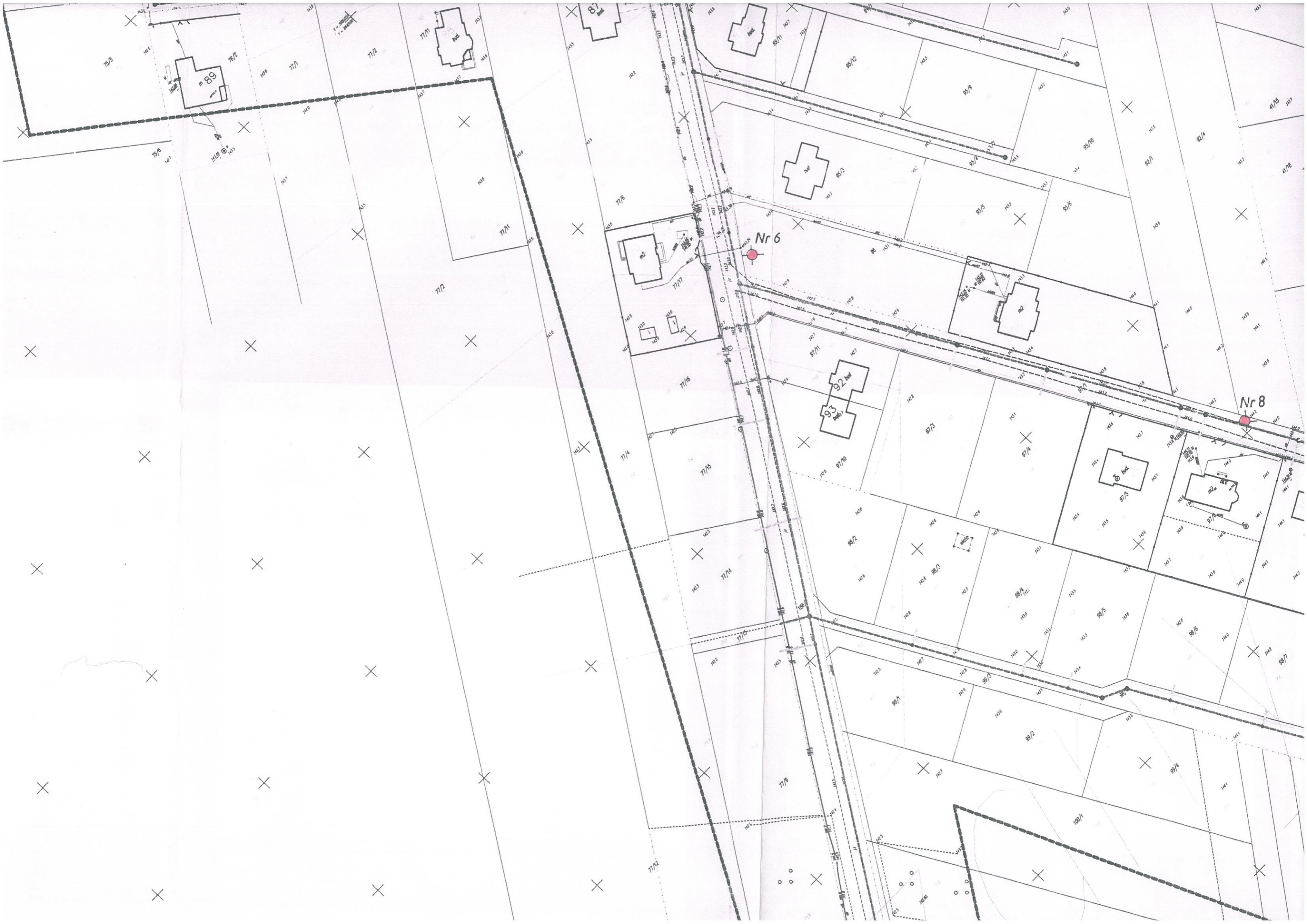
85/9

45/8

80/7

140/8





89

87

Nr 6

Nr 8

77/17

92

91

97/5

97/6

75/5

76/2

77/1

77/2

77/11

77/11

77/6

77/6

77/5

77/4

77/4

77/3

77/2

95/2

95/9

95/10

95/5

95/6

97/5

97/4

98/2

98/3

98/4

98/5

98/6

99/2

100/1

41/5

41/6

41/7

41/8

41/9

41/10

41/11

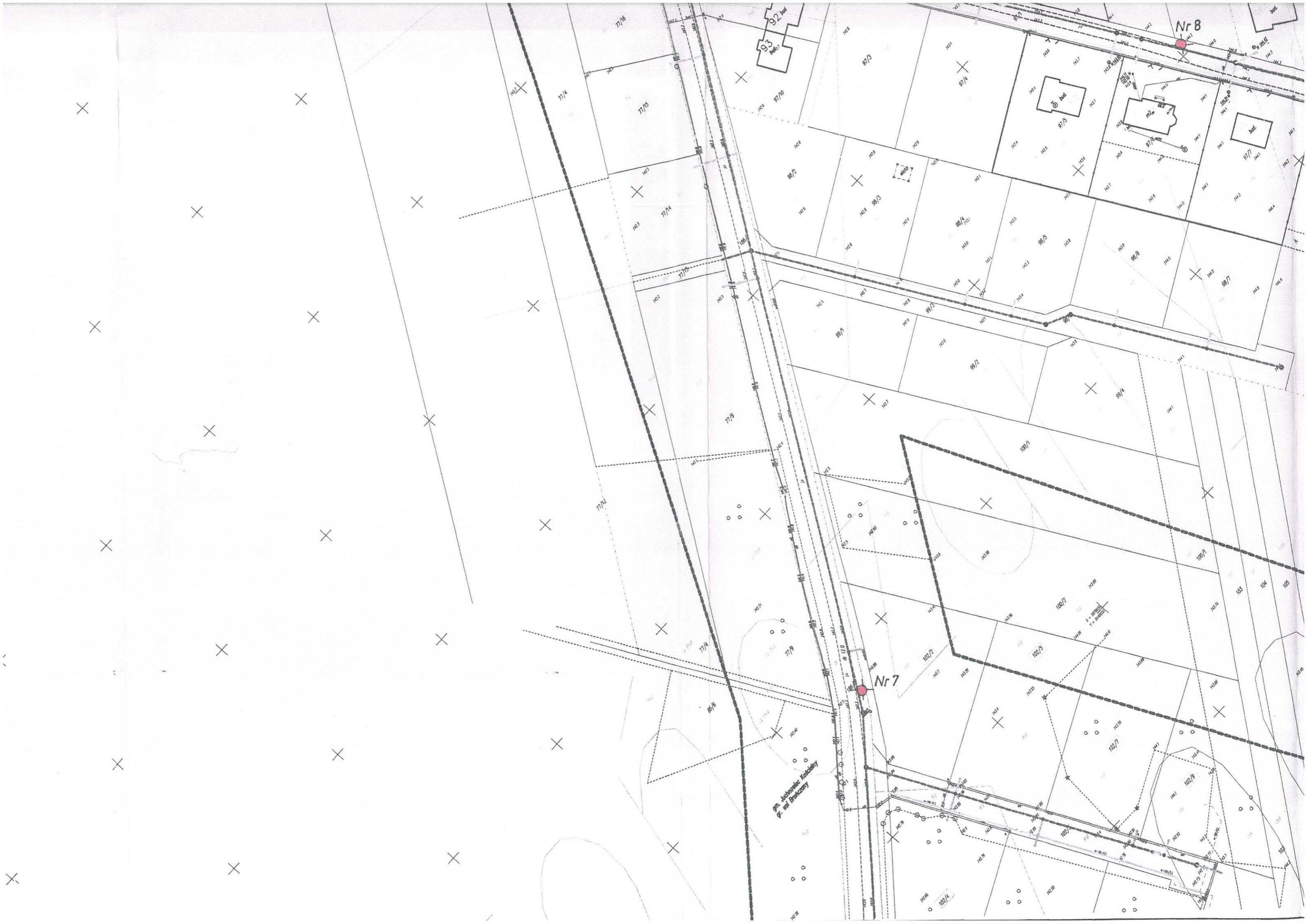
41/12

41/13

41/14

41/15

41/16







Nr 8

Nr 15

Nr 16

Nr 14

Nr 17

ŁĄCZY ARKUSZ 3

Cmentarz Koscielny  
gr. w Bratyczy

Cmentarz Koscielny  
gr. w Łambów

Cmentarz Koscielny  
gr. w Łambów

79A

28/48

28/33

28/34

28/35

28/36

28/37

28/38

28/39

28/40

28/41

28/42

28/43

28/44

28/45

28/74

28/75

28/76

28/77

28/78

28/79

28/80

41/20

41/21

41/22

41/23

41/24

41/25

41/26

41/27

41/28

41/29

41/30

41/31

41/32

41/33

41/34

41/35

41/36

41/37

41/38

92/4

92/5

92/6

92/7

92/8

92/9

92/10

78/3

78/4

78/5

78/6

78/7

78/8

78/9

78/10

78/11

78/12

78/13

78/14

78/15

78/16

78/17

78/18

78/19

78/20

78/21

78/22

78/23

78/24

78/25

78/26

78/27

78/28

78/29

78/30

697/1

697/2

697/3

697/4

697/5

697/6

697/7

697/8

697/9

697/10

697/11

697/12

697/13

697/14

697/15

697/16

697/17

697/18

697/19

697/20



Nr 15

Nr 16

Nr 14

Nr 8

Nr 17

gm. Jabloniec Kościelny  
g. mi. Brodzany

gm. Jabloniec Kościelny  
g. mi. Łowicko

ŁĄCZY ARKUSZ 3

gm. Jabloniec Kościelny  
g. mi. Brodzany

gm. Jabloniec Kościelny  
g. mi. Łowicko

90/4  
91/7  
92/1  
92/4  
94/4  
94/5  
94/6  
95/9  
95/1  
95/5  
95/6  
97/3  
97/4  
97/5  
97/6  
97/7

41/70  
41/73  
41/75  
41/76  
41/78  
41/79  
41/80  
41/81  
41/82  
41/83  
41/84  
41/85  
41/86  
41/87  
41/88  
41/89  
41/90  
41/91  
41/92  
41/93  
41/94  
41/95  
41/96  
41/97  
41/98  
41/99  
41/100  
41/101  
41/102  
41/103  
41/104  
41/105  
41/106  
41/107  
41/108  
41/109  
41/110  
41/111  
41/112  
41/113  
41/114  
41/115  
41/116  
41/117  
41/118  
41/119  
41/120  
41/121  
41/122  
41/123  
41/124  
41/125  
41/126  
41/127  
41/128  
41/129  
41/130  
41/131  
41/132  
41/133  
41/134  
41/135  
41/136  
41/137  
41/138  
41/139  
41/140  
41/141  
41/142  
41/143  
41/144  
41/145  
41/146  
41/147  
41/148  
41/149  
41/150  
41/151  
41/152  
41/153  
41/154  
41/155  
41/156  
41/157  
41/158  
41/159  
41/160  
41/161  
41/162  
41/163  
41/164  
41/165  
41/166  
41/167  
41/168  
41/169  
41/170  
41/171  
41/172  
41/173  
41/174  
41/175  
41/176  
41/177  
41/178  
41/179  
41/180  
41/181  
41/182  
41/183  
41/184  
41/185  
41/186  
41/187  
41/188  
41/189  
41/190  
41/191  
41/192  
41/193  
41/194  
41/195  
41/196  
41/197  
41/198  
41/199  
41/200

28/74  
28/75  
28/76  
28/77  
28/78  
28/79  
28/80  
28/81  
28/82  
28/83  
28/84  
28/85  
28/86  
28/87  
28/88  
28/89  
28/90  
28/91  
28/92  
28/93  
28/94  
28/95  
28/96  
28/97  
28/98  
28/99  
28/100  
28/101  
28/102  
28/103  
28/104  
28/105  
28/106  
28/107  
28/108  
28/109  
28/110  
28/111  
28/112  
28/113  
28/114  
28/115  
28/116  
28/117  
28/118  
28/119  
28/120  
28/121  
28/122  
28/123  
28/124  
28/125  
28/126  
28/127  
28/128  
28/129  
28/130  
28/131  
28/132  
28/133  
28/134  
28/135  
28/136  
28/137  
28/138  
28/139  
28/140  
28/141  
28/142  
28/143  
28/144  
28/145  
28/146  
28/147  
28/148  
28/149  
28/150  
28/151  
28/152  
28/153  
28/154  
28/155  
28/156  
28/157  
28/158  
28/159  
28/160  
28/161  
28/162  
28/163  
28/164  
28/165  
28/166  
28/167  
28/168  
28/169  
28/170  
28/171  
28/172  
28/173  
28/174  
28/175  
28/176  
28/177  
28/178  
28/179  
28/180  
28/181  
28/182  
28/183  
28/184  
28/185  
28/186  
28/187  
28/188  
28/189  
28/190  
28/191  
28/192  
28/193  
28/194  
28/195  
28/196  
28/197  
28/198  
28/199  
28/200

724/1  
724/2  
724/3  
724/4  
724/5  
724/6  
724/7  
724/8  
724/9  
724/10  
724/11  
724/12  
724/13  
724/14  
724/15  
724/16  
724/17  
724/18  
724/19  
724/20  
724/21  
724/22  
724/23  
724/24  
724/25  
724/26  
724/27  
724/28  
724/29  
724/30  
724/31  
724/32  
724/33  
724/34  
724/35  
724/36  
724/37  
724/38  
724/39  
724/40  
724/41  
724/42  
724/43  
724/44  
724/45  
724/46  
724/47  
724/48  
724/49  
724/50  
724/51  
724/52  
724/53  
724/54  
724/55  
724/56  
724/57  
724/58  
724/59  
724/60  
724/61  
724/62  
724/63  
724/64  
724/65  
724/66  
724/67  
724/68  
724/69  
724/70  
724/71  
724/72  
724/73  
724/74  
724/75  
724/76  
724/77  
724/78  
724/79  
724/80  
724/81  
724/82  
724/83  
724/84  
724/85  
724/86  
724/87  
724/88  
724/89  
724/90  
724/91  
724/92  
724/93  
724/94  
724/95  
724/96  
724/97  
724/98  
724/99  
724/100

701/1  
701/2  
701/3  
701/4  
701/5  
701/6  
701/7  
701/8  
701/9  
701/10  
701/11  
701/12  
701/13  
701/14  
701/15  
701/16  
701/17  
701/18  
701/19  
701/20  
701/21  
701/22  
701/23  
701/24  
701/25  
701/26  
701/27  
701/28  
701/29  
701/30  
701/31  
701/32  
701/33  
701/34  
701/35  
701/36  
701/37  
701/38  
701/39  
701/40  
701/41  
701/42  
701/43  
701/44  
701/45  
701/46  
701/47  
701/48  
701/49  
701/50  
701/51  
701/52  
701/53  
701/54  
701/55  
701/56  
701/57  
701/58  
701/59  
701/60  
701/61  
701/62  
701/63  
701/64  
701/65  
701/66  
701/67  
701/68  
701/69  
701/70  
701/71  
701/72  
701/73  
701/74  
701/75  
701/76  
701/77  
701/78  
701/79  
701/80  
701/81  
701/82  
701/83  
701/84  
701/85  
701/86  
701/87  
701/88  
701/89  
701/90  
701/91  
701/92  
701/93  
701/94  
701/95  
701/96  
701/97  
701/98  
701/99  
701/100